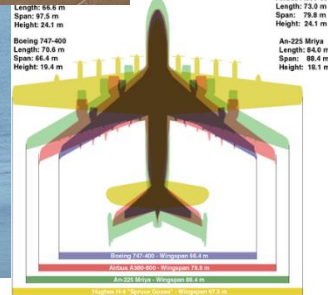


# WoodC.A.R. - Wood-based materials for functional vehicle structures

Christian Kurzböck, Thomas Jost, Virtual Vehicle  
Priv.-Doz. Dr. Ulrich Müller, Institut für Holztechnologie und Nachwachsende Rohstoffe / Universität für Bodenkultur Wien  
DI Dr. Florian Feist, Vehicle Safety Institute TUGraz  
Dr.-Ing. Stefan Hartmann, DYNAMore GmbH

**FFG - COMET K-Project**  
**Wood - Computer Aided Research**



De Havilland Mosquito bomber, Cessna AT10, H-4 Hercules named the Spruce Goose, Giant Plane Comparison

Wooden bicycle frame



2016 Toyota Setsuna EV Concept



Train bogie

## Scientific Partners



innovationszentrum-weiz.at



boku.ac.at



v2c2.at



tugraz.at



uni-graz.at



fh-joanneum.at

## Business Partners



acstyria.com



collano.com



doka.com



dynamore.de



ejot.at



forstholzpapier.at



holzcluster-steiermark.at



ibsteiner.com



lean-mc.com



magna.com



man.eu



MATTRO  
Driven By Ecologic

matro.eu

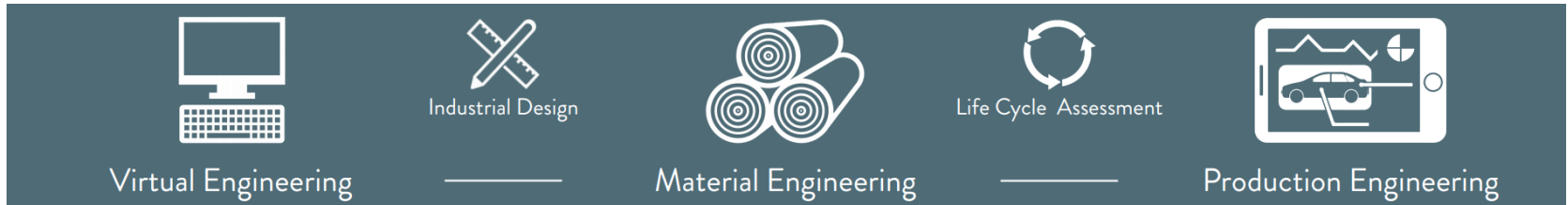


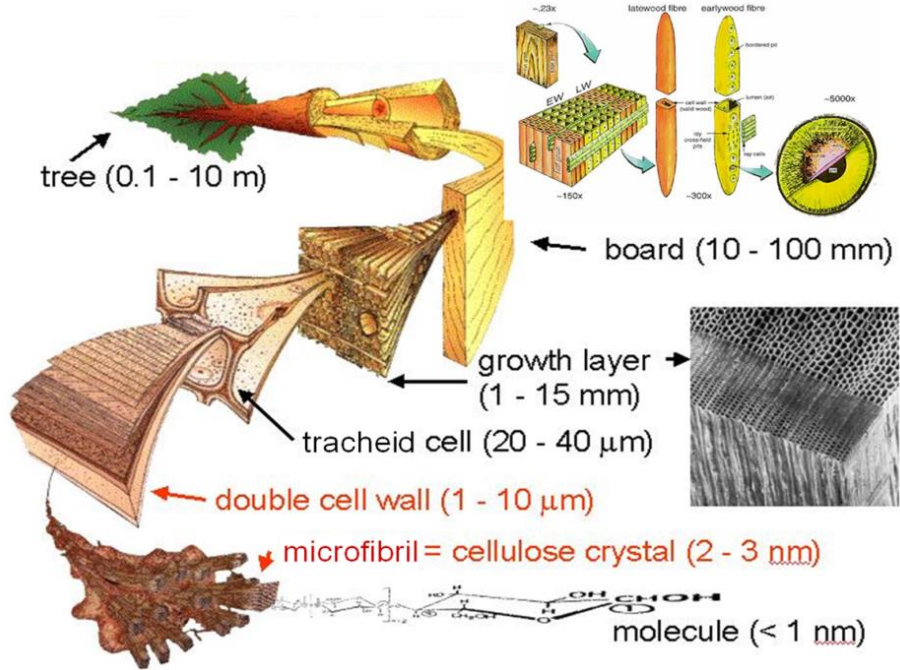
volkswagenag.com



weitzer-parkett.com

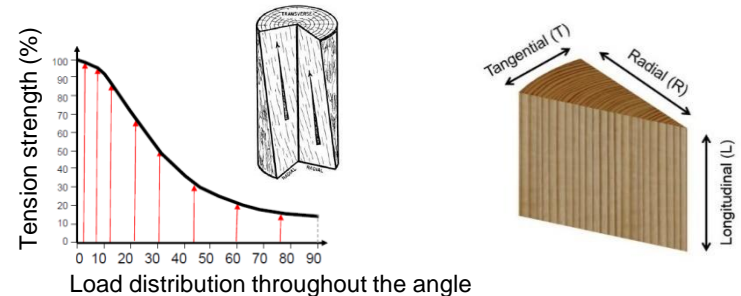
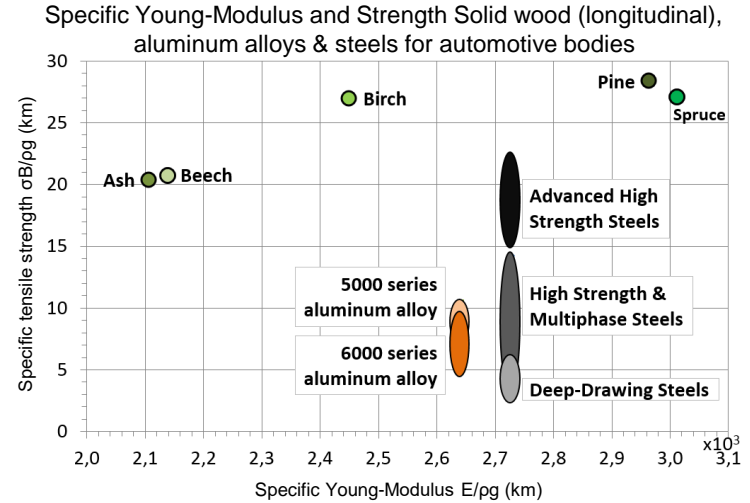
The vision of the K-Project WoodC.A.R. (**Wood** – **Computer Aided Research**) is to introduce **Engineered Wood Products (EWP)**, **Engineered Wood Components (EWC)** and wood-based materials to the mobility sector, which follows the demand for improvement of environmental and economic sustainable materials in this branch. Key for the application of EWPs and EWCs in the engineering and the development process are reliable **Computer Aided Engineering (CAE)** models of wooden materials exposed to dynamic and static loads. Additionally, new production technologies for shaping, joining and bonding are required. Simulation tools as well as new technologies will open new markets within and beyond the mobility sector.

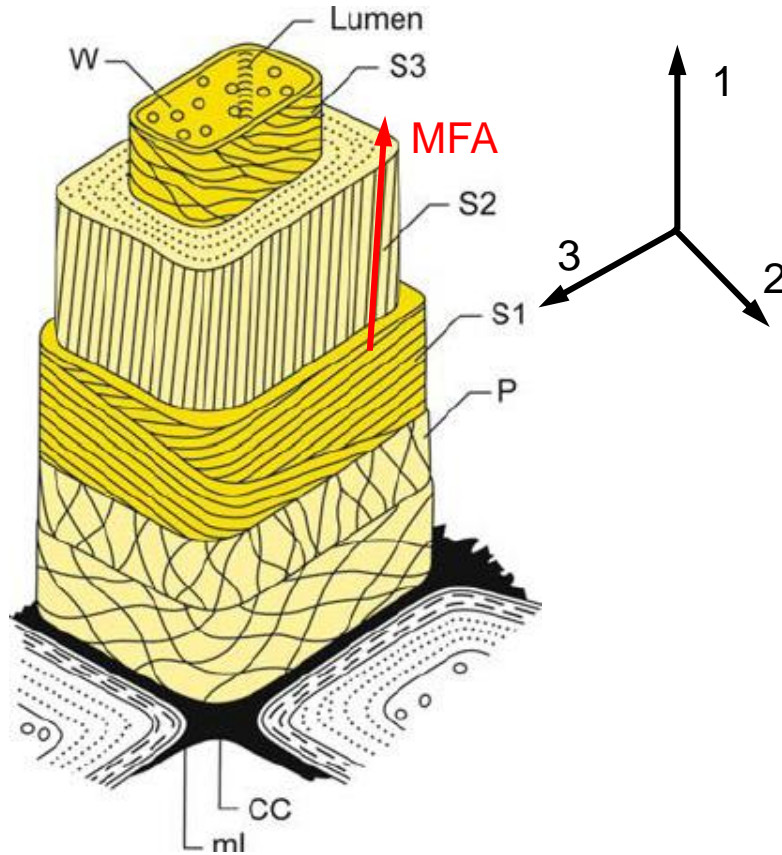




Source: The hierarchical structure of cellulose in wood. From an artwork by Mark Harrington, Copyright University of Canterbury, 1996.

Dealing with wood properties demands considering all hierarchical levels of wood structure





Fibre reinforced laminate: calculation of the wood cell wall elastic properties (E and G)

S2: 80% of cell wall

Orientation of cellulose micro fibrils in S2 = MFA

Roles of mixture

$\theta = \text{MFA}$

$$E_1 = V_c * E_{1c} + V_m * E_{1m}$$

$$E_2 = E_{2c} * E_{2m} / (V_c * E_m + V_m * E_{2c})$$

$$G_{12} = G_{12c} * G_m / (V_c * G_m + V_m * G_{12c})$$

	C (GPa)	HC (GPa)	L (GPa)
$E_1$	167.5	7.0	2.0
$E_2$	30.5	3.5	2.0
$G_{12}$	3.0	1.8	0.8

$E_1$  = Young's Modulus in longitudinal direction

$E_2$  = Young's Modulus in transverse direction

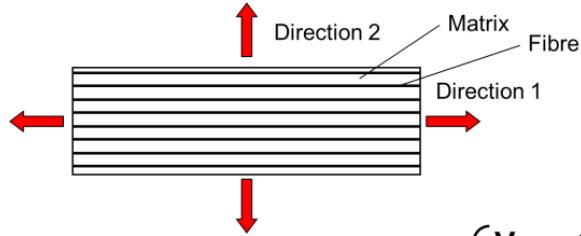
$\nu_{12}$  = Poisson's ratio in longitudinal direction

$\nu_{21}$  = Poisson's ratio in transverse direction

m = matrix material (lignin + hemicellulose)

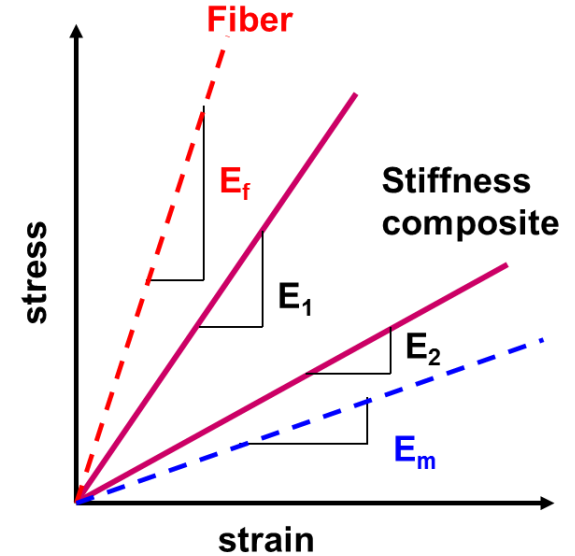
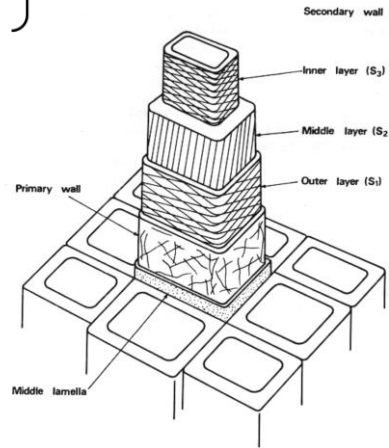
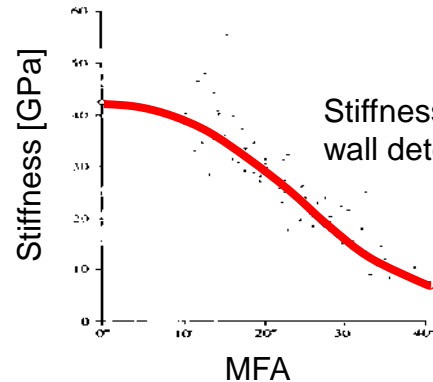
c = fibre material (cellulose)

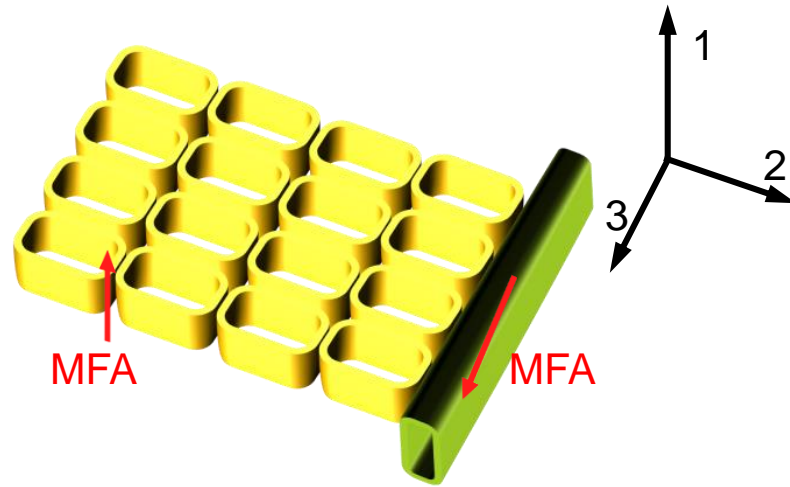
Fiber-reinforced composites consisting of matrix (m) and fibre (f) materials



$$E_1 = E_f V_f + E_m (1 - V_f)$$

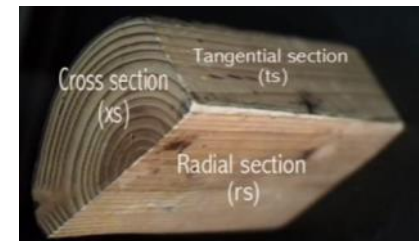
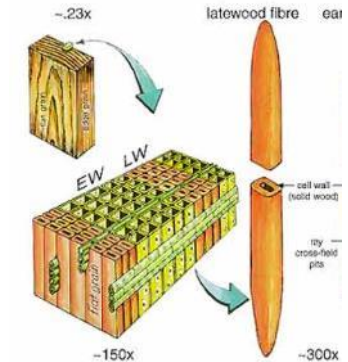
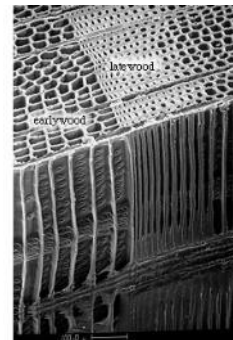
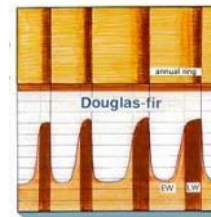
$$E_2 = \left( \frac{V_f}{E_f} + \frac{1 - V_f}{E_m} \right)^{-1}$$



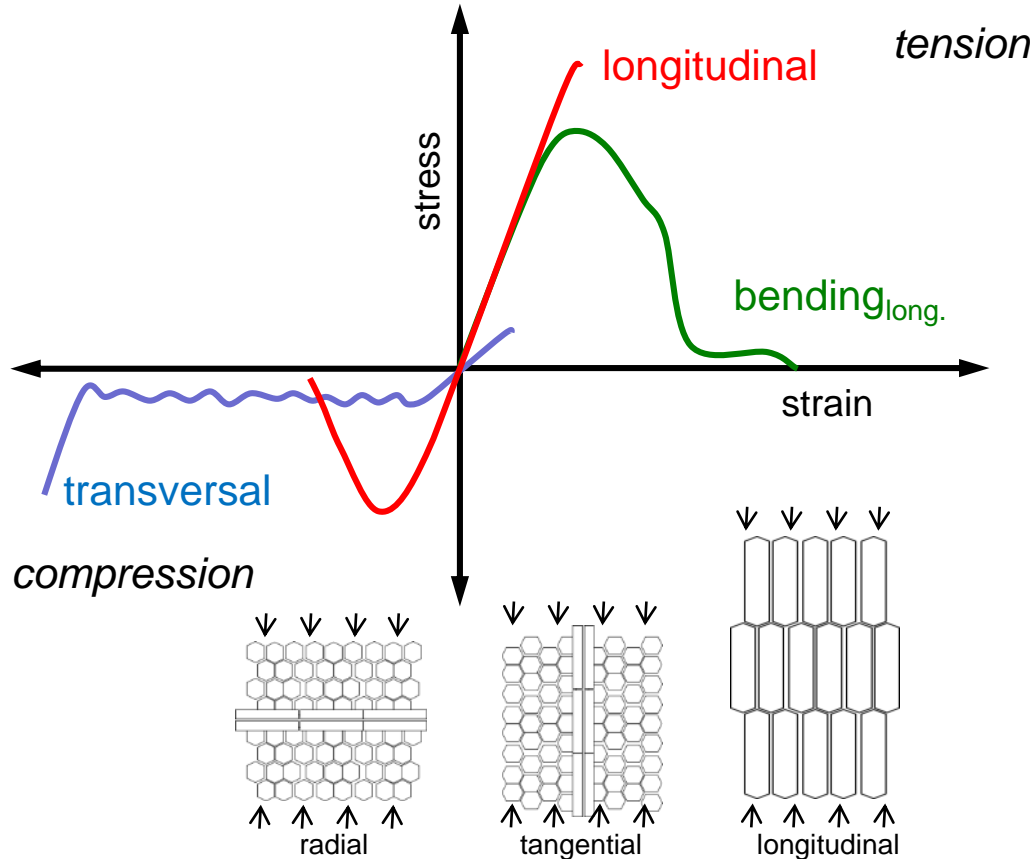


Physical and mechanical differences between tangential (2) and radial (3) direction based on MFA, geometry of cells and rays

In comparison to the cell wall, solid wood is not a fibre composite but could be understood as a composite sandwich structure.







## Tension:

- Brittle failure in longitudinal and transversal direction

## Compression:

- Ductile behaviour in longitudinal
- Reduction in force to almost 0?
- Highly plastic deformation in transversal direction

## Bending:

- Longitudinal: ductile behaviour until tensile strength is reached, then stepwise brittle failure
- Transversal: brittle failure due to low tensile strength perpendicular to grain

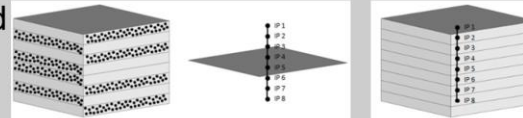
## Shearing:

- Abrupt failure in all directions

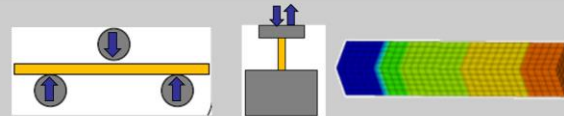
- Material characterization



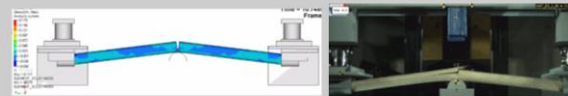
- Select appropriate modeling method
  - material cards
  - FE-model for wood



- Validation material simulation



- Validation component simulation



Solid wood



Plywood

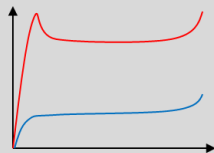


SOLID

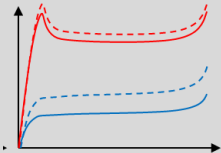
SHELL

TSHELL

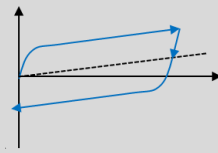
Softening or kinking / pushing



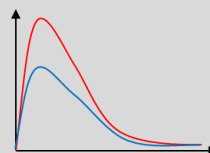
Strain rates dependency



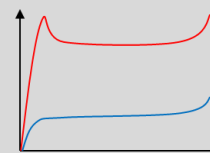
Nonlinearity



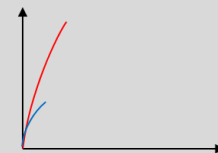
Softening shear



Densification (compression)



Failure



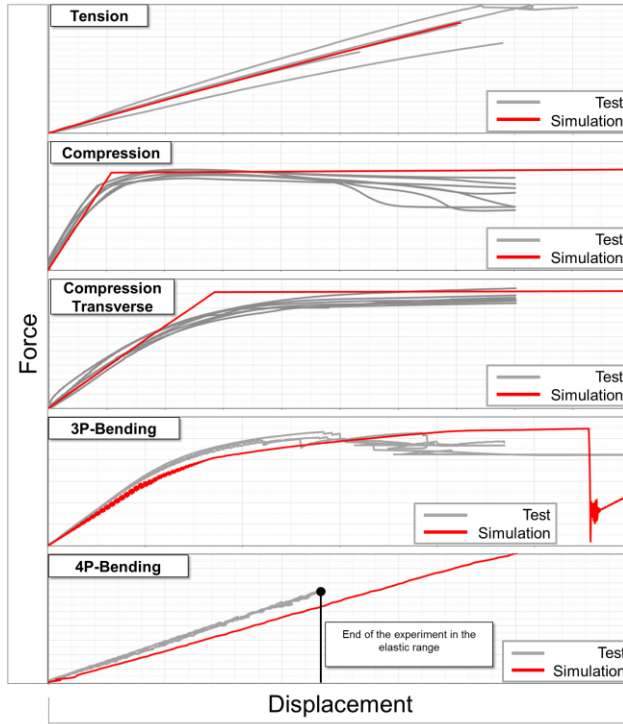
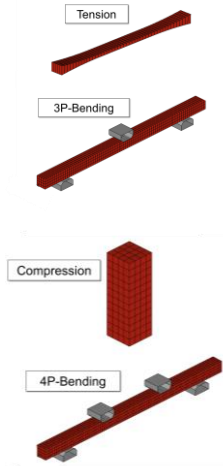
\*MAT\_ENHANCED\_COMPOSITE\_DAMAGE (\*MAT\_054)

\*MAT\_LAMINATED\_COMPOSITE\_FABRIC (\*MAT\_058)

\*MAT\_WOOD (\*MAT\_143)

\*MAT\_LAMINATED\_FRACTURE\_DAIMLER\_CAMANHO (\*MAT\_262)

\*MAT\_LAMINATED\_FRACTURE\_DAIMLER\_PINHO (\*MAT\_261)



## Tension:

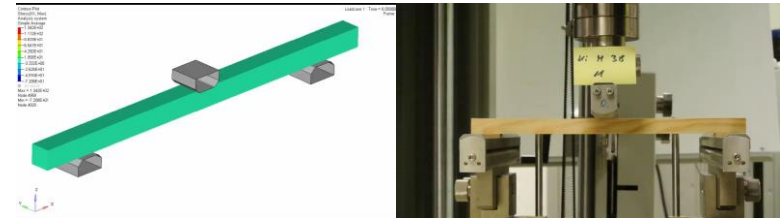
- Quite good results in elastic region
- ToDo: Failure behaviour

## Compression:

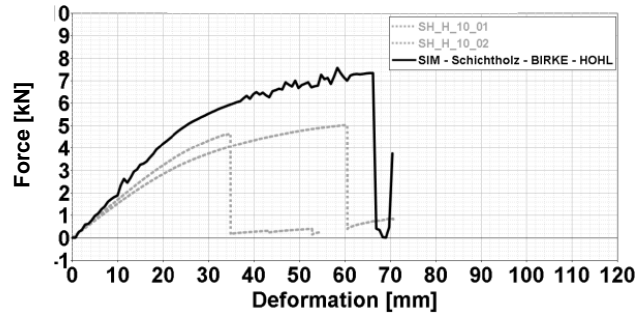
- Good results in simulation
- No failure on compression simulation

## Bending:

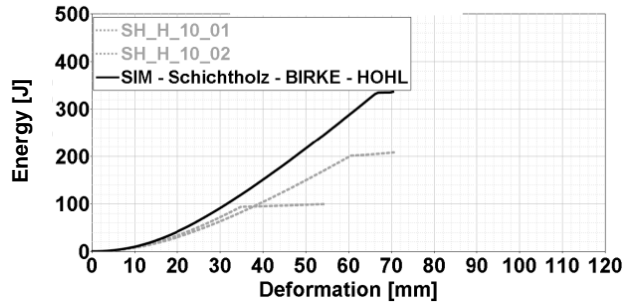
- 3P-Bending: ductile behaviour until tensile strength is reached, than stepwise failure on the tension side
- 4P-Bending: no shear failure



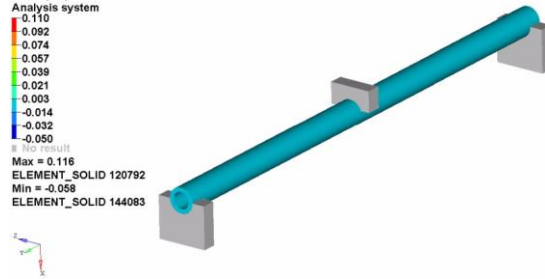
Static



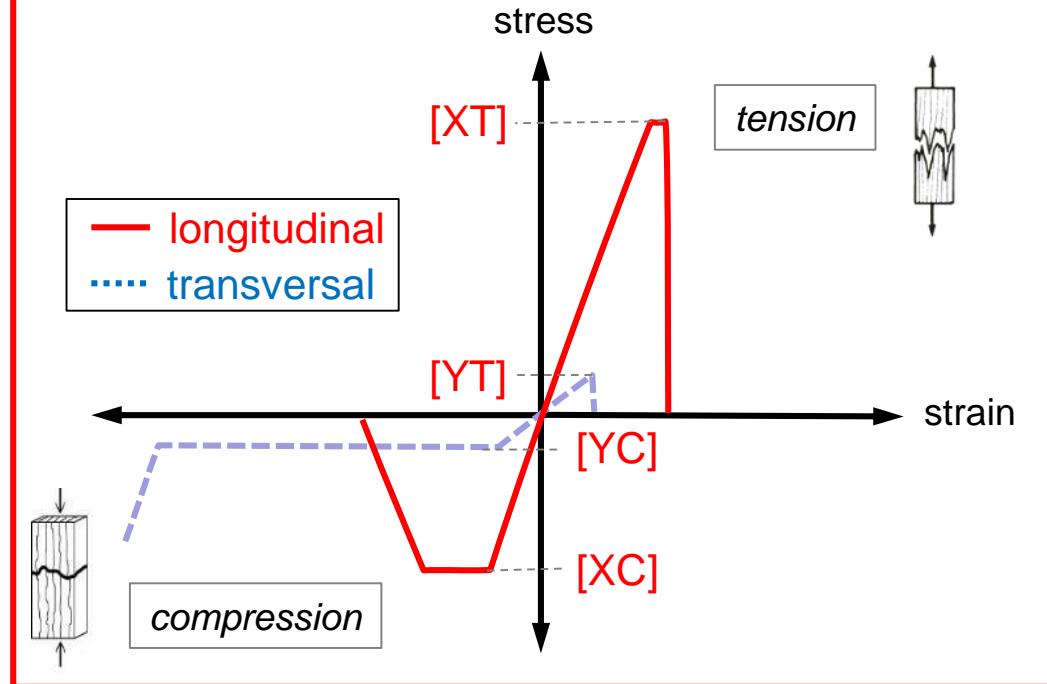
- No consideration of the adhesive
- The laminated wood composite is significantly overestimated in terms of energy absorption up to the component failure in the simulation, since the lower adhesive rigidity compared to wood is not taken into account
- Due to the very simplified material modeling, the progressive damage after crack initiation in solid wood can not be reproduced



Contour Plot  
Stress(XX)  
Analysis system  
0.110  
0.092  
0.074  
0.057  
0.039  
0.021  
0.003  
-0.014  
-0.032  
-0.050  
# No Result  
Max = 0.116  
ELEMENT\_SOLID 120792  
Min = -0.058  
ELEMENT\_SOLID 144083



## Material card – MAT xx - wood



- FE material simulation of wood and wood composites for complex structures under crash loading can be performed with standard material cards
- Further significant improvements can be achieved by additional adjustments to the material model with respect to the failure and damage model as well as strain rate effects
- Functional structural components, in terms of basic function to the initial failure can be designed and evaluated in an early vehicle development phase
- Joining technology plays a major role and must be considered especially in plywood and wood composites



Photo: Mattro

The K-Project WoodC.A.R. – Computer Aided Research is funded within the scope of COMET - Competence Centers for Excellent Technologies by BMVIT, BMDW and the federal states Styria and Tyrol. The program COMET is managed by the FFG.



Bundesministerium für  
Digitalisierung und  
Wirtschaftsstandort



[www.woodcar.eu](http://www.woodcar.eu)



## Contact:

Consortium management



**Mag. (FH) Bernadette Karner**

**Prof. Mag. Stefan Haidinger**

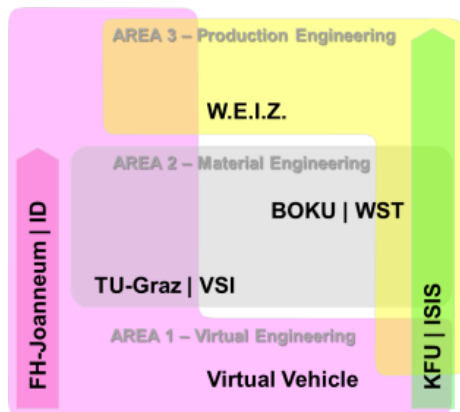
Energy and Innovation Centre of Weiz

Franz-Pichler-Straße 30, 8160 Weiz, Austria

Phone: +43 (0) 3172 603-1123; +43 (0) 3172 603-1125

Email: woodcar@innovationszentrum-weiz.at

Scientific management



<http://www.woodcar.eu/>



**Priv.-Doz. Dr. Ulrich MÜLLER**

University of Natural Resources and Life Sciences, Vienna

Konrad-Lorenzstraße 24, 3430 Tulln, Austria

Phone: +43 (1) 47654-4252

Email: ulrich.mueller@boku.ac.at



**DI (FH) Thomas Jost**

VIRTUAL VEHICLE Research Center

Inffeldgasse 21/A, 8010 Graz, Austria

Phone: +43 (0) 316 873-9075

Email: thomas.jost@v2c2.at



**Dr. Florian Feist**

Vehicle Safety Institute

Inffeldgasse 23/I, 8010 Graz, Austria

Phone: +43 (0) 316 873-30312

Email: florian.feist@tugraz.at